

# DelMorino®

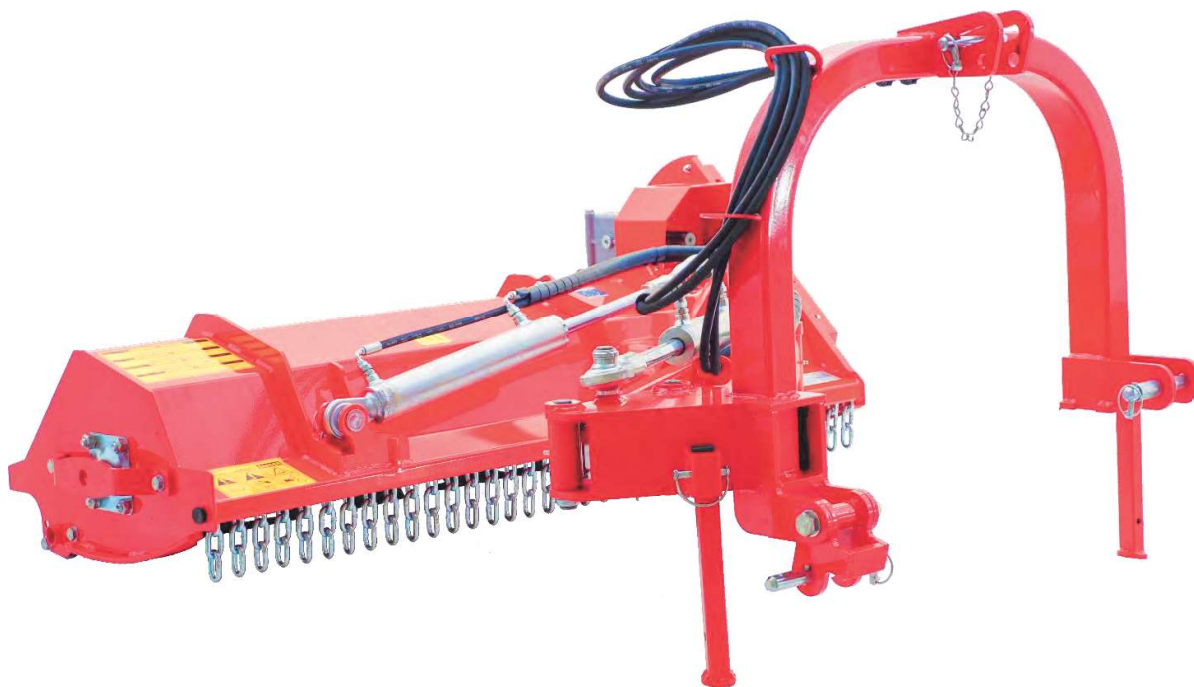
FARM & GARDEN EQUIPMENT



**Del Morino S.r.l.**  
Via Caroni di Sotto, 19  
Cap 52033 - Caprese Michelangelo - AR  
Tel: +39-575-791059 Fax: +39-575-791210  
Web: <http://www.del-morino.it> e-mail: [export@del-morino.it](mailto:export@del-morino.it)

## USE AND MAINTENANCE MANUAL

# FLAIL MOWER FUNNY SUPER



IT

EN

FR

DE

ES

RU



## PREFACE

**DEL MORINO SRL**

Caroni di Sotto, 19 - I-52033 Caprese Michelangelo AR Italy  
Phone: +39-575-791059 - Fax: +39-575-791210  
Website: <http://www.delmorino.it> – e-mail: [export@delmorino.it](mailto:export@delmorino.it)

All rights reserved  
Printed in Italy

DEL MORINO SRL thanks you for choosing us and for confidence in the quality of our implements.

IT

EN

FR

DE

ES

RU

### This manual is an integral part of the implement

It must always come with the implement and be at user's disposal.  
All attachments are integral part of the manual.

### The purpose of this manual

This manual provides information for the correct and safe use of the implement.  
The owner must read this manual carefully before working with the implement.

### Responsibility of the owner

The owner is responsible for accidents or damages caused to people or things due to negligence in following the instructions of this manual.

### Assistance in using this manual

Explanations: contact the dealer.

Request for additional copies of the manual: in case of loss or wear and tear, or in case the manual is needed in a different language, ask the dealer or the manufacturer.

### Pay attention to the warning labels



**DANGER:** indicates an imminent dangerous situation which, if not avoided, will cause death or serious injury and/or damage.



**WARNING:** indicates a potentially dangerous situation which, if not avoided, will cause death or serious injury and/or damage.



**CAUTION:** indicates a potentially dangerous situation which, if not avoided, can cause minor to moderate damage or it warns about an unsafe procedure.



**IMPORTANT:** indicates instructions that must be followed precisely in order to avoid damage to the product, process or environment.



**NOTE:** indicates supplementary information.

## DESCRIPTION

### FIELD OF USE

The hydraulic adjustment system allows the implement to perform several functions, such as cutting grass, stalks, pruning and edges.

The use of a technical constructive concept aimed at reaching high performances, reliability and durability improves the efficiency in terms of power/tractor consumption ratio, thanks to the rigidity of the implement frame, the shape of the tools, the perfect dynamic balancing of the rotor and many others original technical solutions.

### PERFORMANCES

The implement is connected to the tractor through the 3-point hitch and a PTO shaft. The first one allows the implement to side-shift, the second one, connected to the tractor PTO, allows the rotation of the shaft.

The hydraulic parallelogram mechanism moves the implement to the right and to the left in relation to the axle of the tractor, the hydraulic rotation mechanism tilts the implement in relation to the ground.

The working width is fixed and is determined by the model.

The cutting height is adjustable.

The rear roller regulates the cutting height and compacts the cut material.

### PERFORMANCE LIMITS

- Max speed: 5 km/h (3 mph). Speed higher than that indicated may compromise the integrity of the implement, the quality of the work and the safety of the operator.
- Max power applicable to the gearbox: 8 kW  $\pm$  5% to 540 RPM. Power higher than that indicated can damage the gearbox irreparably, especially if you are performing heavy-duty work.

### STANDARD FEATURES

- Standard PTO shaft.
- Free wheel device integrated in the gearbox.
- Adjustable rear roller.

### VARIANTS & ACCESSORIES

- Tools: blades.
- Tools: hammers.

IT

EN

FR

DE

ES

RU

## TECHNICAL FEATURES

## SPECIFICATIONS PER MODEL

Model	Type	Power		Working width		Weight		N° tools	N° RPM rotor
		Hp	kW	cm	in	kg	lbs	n°	RPM
<b>FUNNY SUPER BLADES</b>	106	15-35	12-27	106	42	217	478	32	2410
	132	25-35	19-27	132	52	240	529	40	2410
<b>FUNNY SUPER HAMMERS</b>	106	15-35	12-27	106	42	217	478	16	2410
	132	25-35	19-27	132	52	240	529	20	2410

## SAFETY INFORMATION

### GENERAL REQUIREMENTS



**ATTENTION:** To prevent damage due to the launch of objects or parts of blades, before starting to work, be sure that no persons or animals are within a radius of 50 meters (164 ft) from the implement.

- Work only during daytime.
- Wear long trousers and heavy shoes.
- The protective flaps and other devices are integral part of the implements: never work without the protective flaps or devices.
- Make sure that there are no stones, sticks, iron wires, etc on the ground.
- Pay attention when using the implement on slopes: proceed in the direction of the maximum slope and never work in oblique direction.
- Before leaving the driver's seat, disengage the engine-shaft transmission and turn off the engine.
- Check the implement immediately if it hits foreign objects.
- Check the implement immediately if it begins vibrating strongly.
- Change defective parts immediately.

### ATTENTION, DANGER!

The gearbox is equipped with a free-wheel device. After stopping the PTO, the rotor continues to spin for at least 30 seconds: before approaching the tools make sure that the rotor has stopped turning.

### ATTENTION!

To prevent damage to the PTO shaft and to the gearbox, do not start the implement roughly.

### SAFETY RESTRICTIONS

Do not allow children or people who are unfamiliar with the instructions to use the implement.

Local regulations may restrict the use of the implement based on age.

### RUNNING IN

The new implement must be broken in.

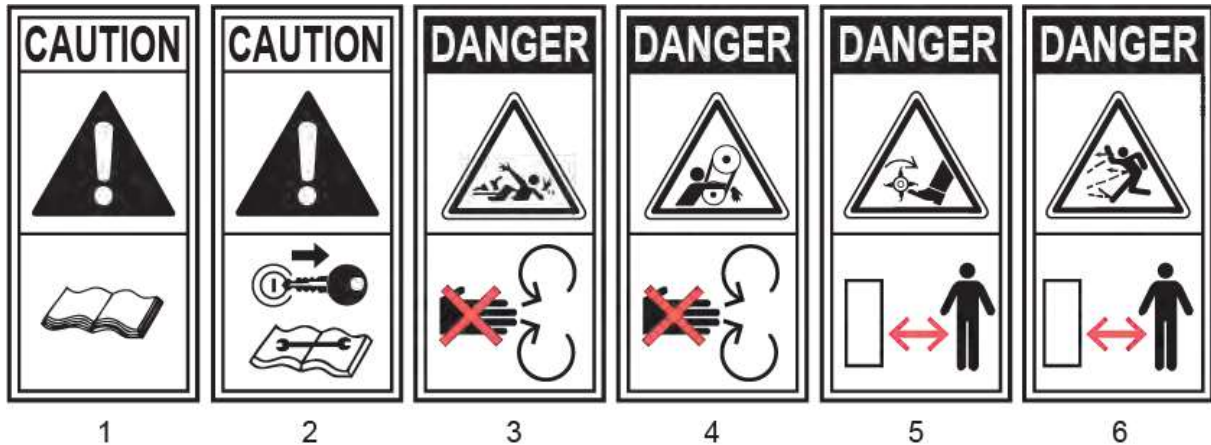
During first usage, attach the implement to the tractor, connect the PTO shaft, lower the implement to 15 cm (6 in) from the ground, start the PTO and gradually increase the RPM to 540.

Let the implement run for about 15 minutes.

It is normal to hear a hiss coming from the supports, it is due to the adjustment of the protections, it will disappear shortly.

## SAFETY LABELS ON THE IMPLEMENT

In this section, the safety labels of the implement are reproduced and explained.



Pic. 1

### Legend

1. Read the manual.
2. Remove the key from the ignition of the tractor before performing maintenance or repairs.
3. Stay at a safe distance from the PTO shaft.
4. Stay at a safe distance from the transmission belts.
5. Stay at a safe distance from the tools.
6. Stay at a safe distance: possible flying objects.

### The safety labels on the implement must be always legible

If damaged, the labels must be replaced.

If parts of the implement with the safety labels are replaced, the labels must be replaced as well.

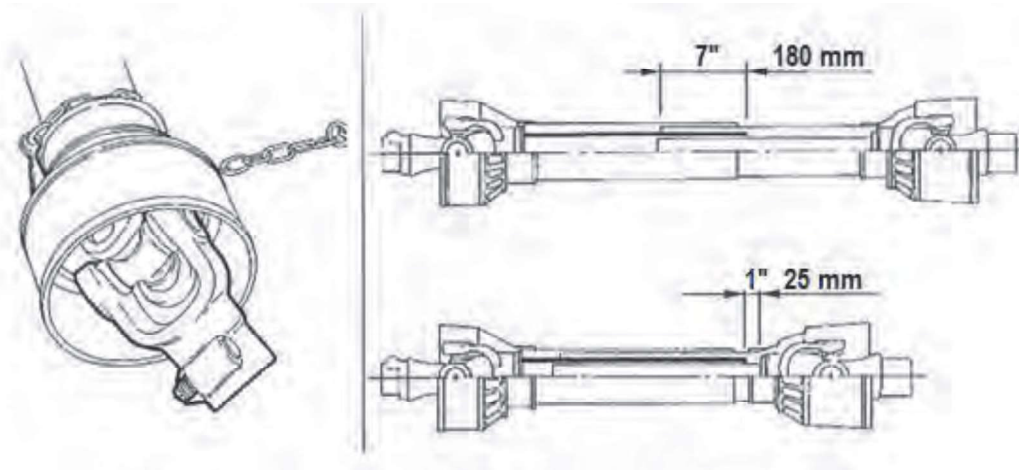
### Supply of new labels and application procedure

Contact your dealer to obtain new safety labels with instructions for application.



## PTO SHAFT

## CHECK THE LENGTH OF THE PTO SHAFT



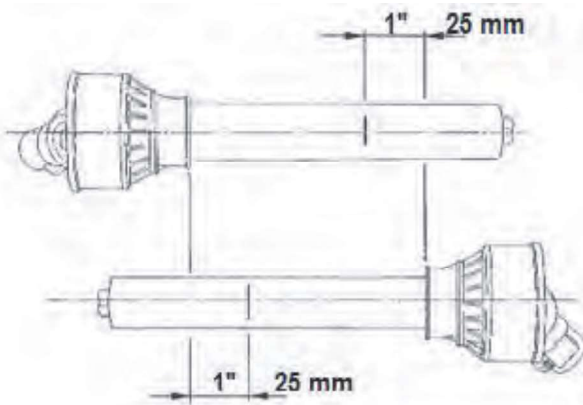
Pic. 2

1. Connect the implement to the 3-point hitch and adjust it so that it is level and centered on the tractor.
2. Insert the PTO shaft between the PTO of the tractor and the implement.
3. Verify that the length of the PTO shaft is correct.
4. To do so, check that the minimum overlap between the inner and outer tube is not less than 180 mm (7 in) in every working position; at the same time, when the shaft is not extended, it should be able to move at least 25 mm (1 in).
5. If the minimum coupling distance is less than 180 mm (7 in), the PTO shaft is short and must be replaced with a longer one.
6. If the PTO shaft is not able to move at least 25 mm (1 in) when is not extended, it is long and must be shortened.



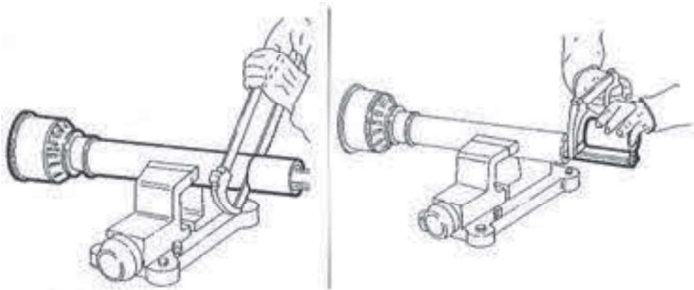
**IMPORTANT:** shortening the PTO shaft is complicated and must be carried out carefully following the instructions in the next chapter, otherwise the PTO shaft may be damaged.

## HOW TO SHORTEN THE PTO SHAFT



Pic. 3

1. Using the hydraulic lift, bring the implement as close as possible to the tractor.
2. In this position, block the lift and turn off the engine.
3. Pull the two parts of the PTO shaft completely apart.
4. Attach the female semi-cardan (tube with larger diameter) into the PTO.
5. Attach the male semi-cardan (tube with smaller diameter) into the implement.
6. With the two parts parallel, use a felt pen to mark the cutting point, as shown in Pic. 3.



Pic. 4

1. Cut the plastic tube of one of the semi cardan with a hacksaw on the cutting line (see 6 above).
2. Align the cut plastic tube with the end of the metal tube and then cut it.
3. Repeat the same operations on the other section of the PTO shaft.
4. Use a file to smooth down the edges of the metal tubes.
5. Clean and grease the two metal tubes and then insert one section into the other.
6. Install the PTO shaft between the tractor and the implement, then verify the length again.

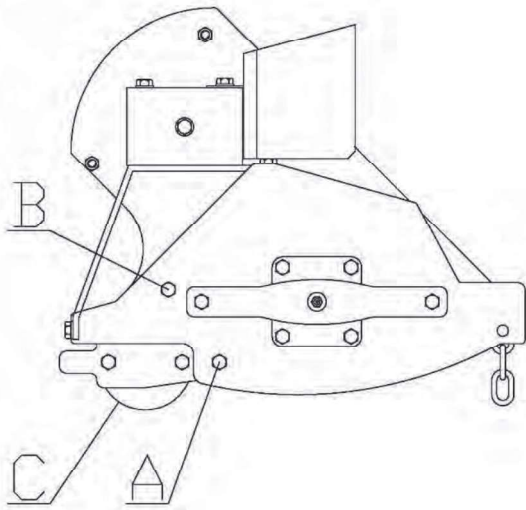
## INSTRUCTIONS FOR USE

## BEFORE STARTING TO WORK



**ATTENTION:** the implement must be connected to an agricultural tractor with 4 hydraulic connections.

- Hook the implement to the tractor as follows:
  1. Remove the spring pins from the two lower connection pins.
  2. Insert the lifting arms of the tractor in the lower pins and then block them with the safety spring pins.
  3. Connect the 3-point hitch of the tractor to the 3-point hitch of the implement (the apex) with the corresponding tie-rod, insert the pin and lock with the spring pin.
  4. Connect the 4 hydraulic tubes to the quick coupling system of the tractor.
- With the implement raised, go to the work site.
- Connect the PTO shaft to the tractor PTO and the implement gear box.
- Check that the chains of the PTO cover are attached to the tractor to prevent from rotating.
- Adjust the cutting height as follow:
  1. Loosen screw "A".
  2. Unscrew screw "B" and remove it.
  3. Repeat the same operations on the other side of the implement.
  4. Choose the position of roller "C". Moving it upward, the cutting height decreases; moving it downward, the cutting height increases.
  5. Insert and tighten screws "B", tighten screws "A".



Pic. 5

## START WORKING

- Make sure that there is no one within a radius of 50 meters (164 ft) around the implement.
- Insert the PTO and increase the rotation speed gradually to its normal speed.
- Lower the implement until the rear roller touches the soil.
- Start working.

## AT THE END OF THE WORK

- Stop the tractor and the PTO shaft. Wait for at least 30 seconds until the rotor has completely stopped.
- Lift the implement up.
- Disconnect the PTO.
- Disconnect the PTO shaft from the PTO of the tractor.
- Lift the implement fully.

## MAINTENANCE INSTRUCTIONS

Maintenance operations and their corresponding intervals are listed in sheet "A".

Not following the schedule maintenance intervals jeopardizes the proper functioning of the implement, thus voiding the guarantee.

### SHEET "A" SCHEDULED MAINTENANCE

	FIRST USE	AFTER 10 H.	EVERY 30 H.	EVERY 500 H.	END OF THE SEASON	BEGINNING OF WORK	END OF WORK
IMPLEMENT	Greasing		Greasing		Cleaning Greasing		Cleaning
GEARBOX	Oil level	Topping	Oil level	Oil change			
SCREWS		Tightening	Tightening				
TOOLS			Check		Check	Check	Check
BELTS		Check tension		Replacement			



**NOTE:** transmission belts will stretch during the first hour of operation.

After the first use, the belts tension must be checked and adjusted according to the instructions in paragraph 4 to prevent the belts from wearing out prematurely due to excessive slipping.

## 1. GREASING

Grease points "B" "C", "D", "E", "F", "G" as indicated in sheet "A".

Greasing points are equipped with a HYDRAULIC GREASER MODEL "A" UNI 7663.

Use only MULTIFUNCTIONAL LITHIUM-BASED OIL TYPE NLGI 2.

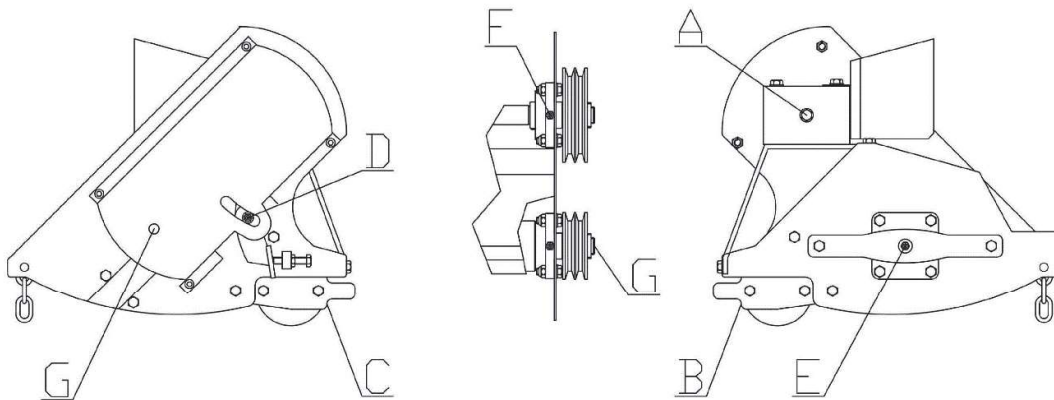
## 2. OIL LEVEL - OIL CHANGE

Check the oil level in the gearbox or replace it as indicated in sheet "A".

To top up the oil, use only SAE 90 OIL.

Gearbox capacity: 0,8 L.

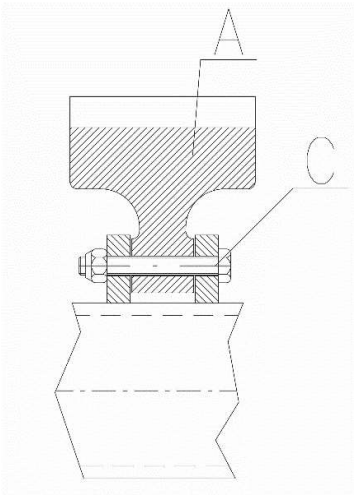
- To check the oil level in the gearbox, proceed as follows:
  1. The implement must be on a flat surface. Unscrew the cap "A" and check that the oil level is just below the edge of the hole.
  2. If the level is OK, tighten the cap "A" carefully.
  3. If the level is LOW, top it up.
  4. When the level is OK, tighten the cap "A" carefully.
- To replace the oil in the gearbox, proceed as follows:
  1. Unscrew the cap "A" and take away all the oil tilting the implement on a side.
  2. Fill oil from cap "A".
  3. When the level is OK, tighten the cap "A" carefully.



Pic. 6

### 3. BLADES REPLACEMENT

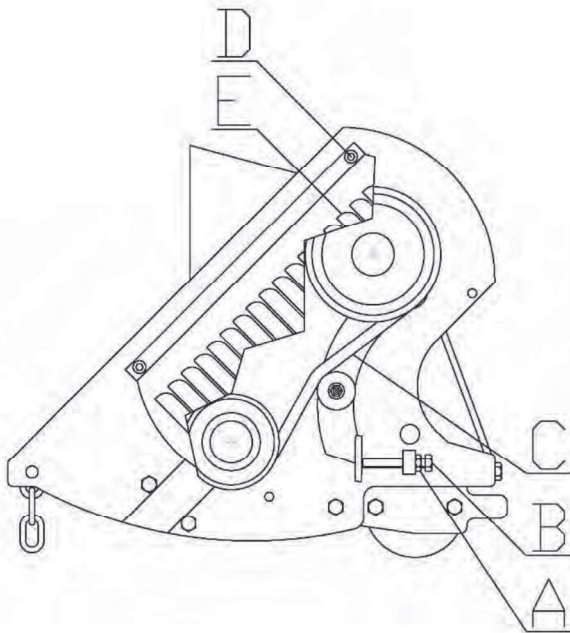
- To replace the blades, proceed as follows:
  1. Unscrew the nut and remove the bolt "C".
  2. Remove the blades "A" with the corresponding spacers.
  3. **ATTENTION:** if the implement is equipped with hammers, there are no spacers.
  4. Place the new blade.
  5. Insert the bolt "C" and tighten the nut.
  6. **ATTENTION:** all blades must be of the same type.
  7. **ATTENTION:** if you change the type of blade, the rotor must be rebalanced.



Pic. 7

#### 4. ADJUSTMENT AND REPLACEMENT OF THE TRANSMISSION BELTS

- To adjust the tension of the transmission belts, proceed as follows:
  1. Remove the belt cover "E" unscrewing the 4 screws "D".
  2. Unscrew the locknut "A", tighten the screw "B" to stretch the belts or unscrew it to loosen them. The tension is correct when you pull the sides of the belts with your thumb and they give away to a few millimeters.
  3. Once the belts are adjusted, tighten the locknut "A" and mount the belt cover "E".
- To replace the transmission belts, proceed as follows:
  1. Remove the belt cover "E" unscrewing the 4 screws "D".
  2. Unscrew the locknut "A" and unscrew completely the adjustment screw "B".
  3. Remove the 2 worn out belts "C".
  4. **ATTENTION:** to avoid tension problems, the belts must be replaced with original belts, whose features are listed in the paragraph "SPARE PARTS LIST".
  5. Repeat operations "2" and "3" of the previous point.
  6. Check the tension of the new belts after 30 minutes of working.



Pic. 8



## TROUBLESHOOTING

MALFUNCTIONS	CAUSE	SOLUTION
<b>Abnormal vibrations</b>	1) Unbalanced rotor. 2) Loss of one or more tools. 3) Worn out bearings.	1) Contact the dealer. 2) Replace missing tools. 3) Replace worn out bearings.
<b>Irregular or unsatisfactory cutting</b>	1) Worn out tools. 2) Incorrect choice of tools.	1) Replace worn out tools. 2) Replace them with another type.

## VARIOUS INFORMATION

### TRANSPORT

Outside its normal field of use, the implement must be moved with the PTO disengaged.



**IMPORTANT:** proceed at moderate speed avoiding holes and rough surfaces.



**NOTE:** on the road, abide by the traffic laws. Attach labels to the rear side of the implement indicating the contour of the implement. Abide by all local regulations.



**ATTENTION:** secure the lifting bars of the tractor with chains and parallel tensioners to prevent the bars from moving side to side.

### DEPOSIT

Store the implement in a dry and not dusty place.

### INFORMATION ABOUT DEMOLITION



At the end of its working life, the implement must be demolished and that can only be done by an authorized authority, in accordance with the national laws about the environment. Therefore, it is necessary to get information from qualified local authorities about the procedure to follow. The implement is mainly composed of iron materials, rubber and epoxide paints.

### WARRANTY

The implement is covered by the manufacturer warranty for 24 months.

The warranty is void if:

- a) The implement has not been regularly maintained.
- b) The implement has been used outside its field of use.
- c) The implement has been modified without the prior written permission of the manufacturer.

# WORK AND MAINTENANCE SHEET

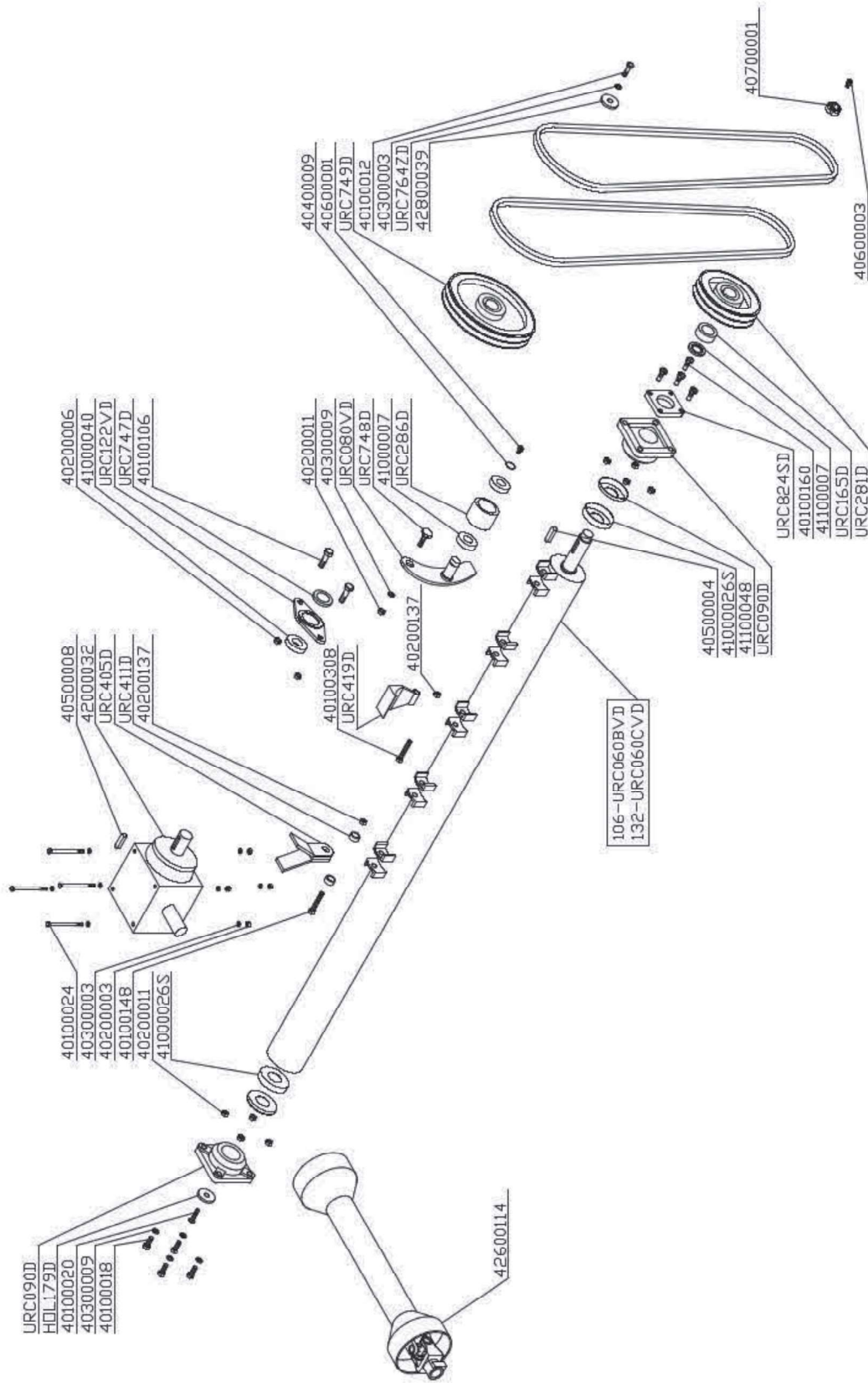
Every user should register the facts about the history of the implement (both operation and maintenance) on this sheet, to verify its conditions.

DATE	HOURS OF OPERATION	MAINTENANCE	NOTES	OPERATOR

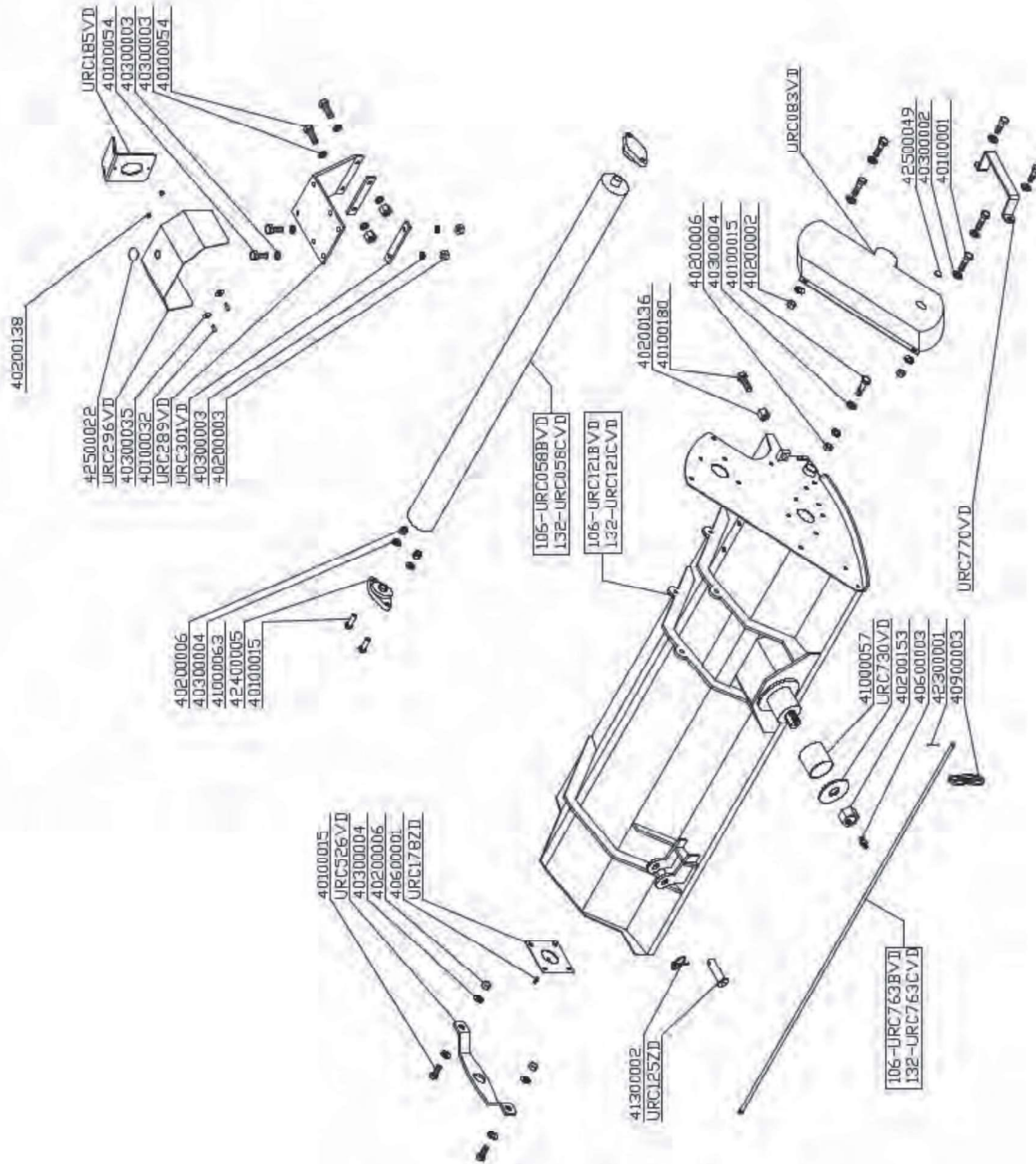
## IMPLEMENT SPARE PARTS

Following is the technical parts breakdown of the components of the implement and its accessories.

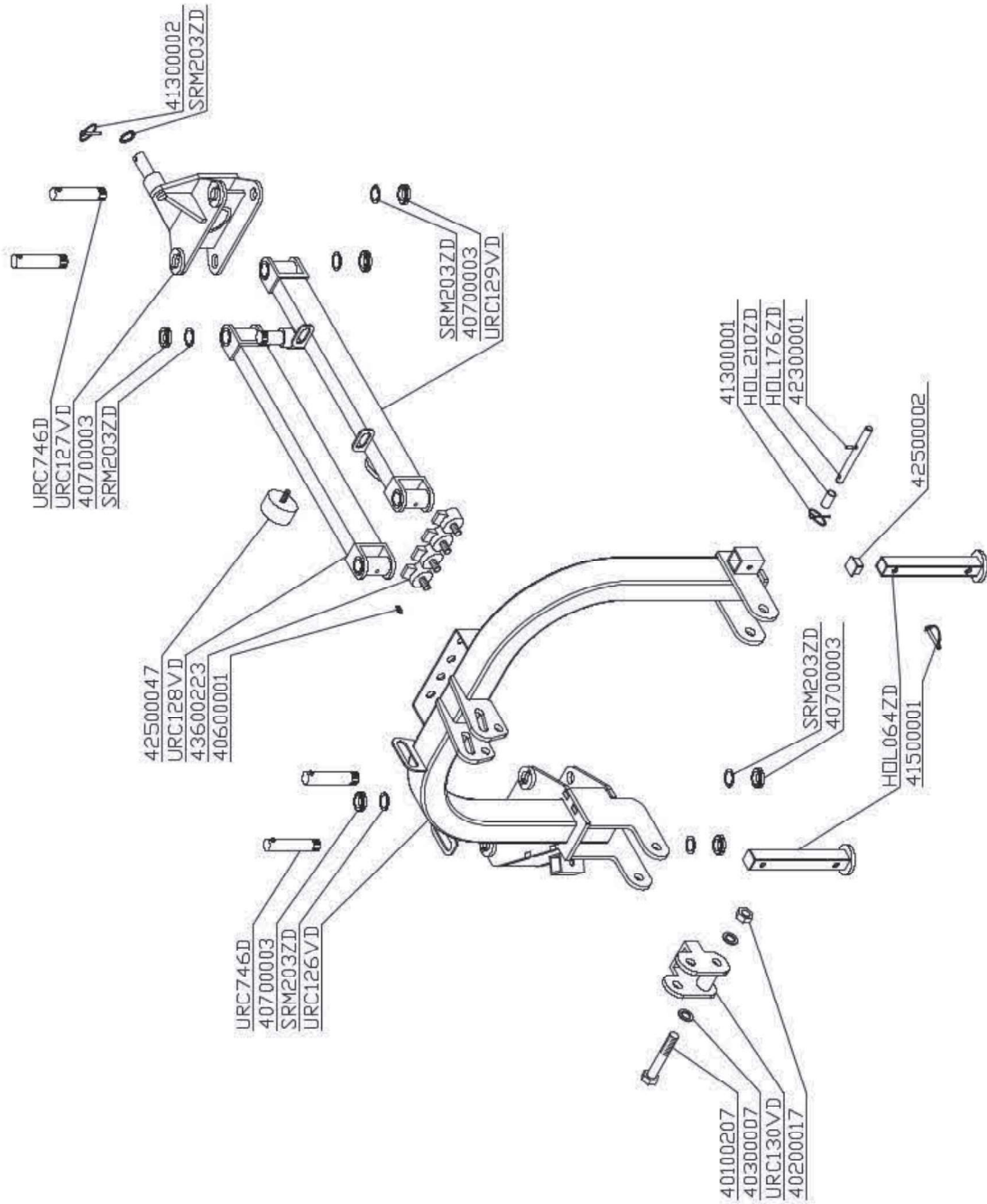
MECHANISMS



SHEETS



### 3 POINT HITCH



EN IT

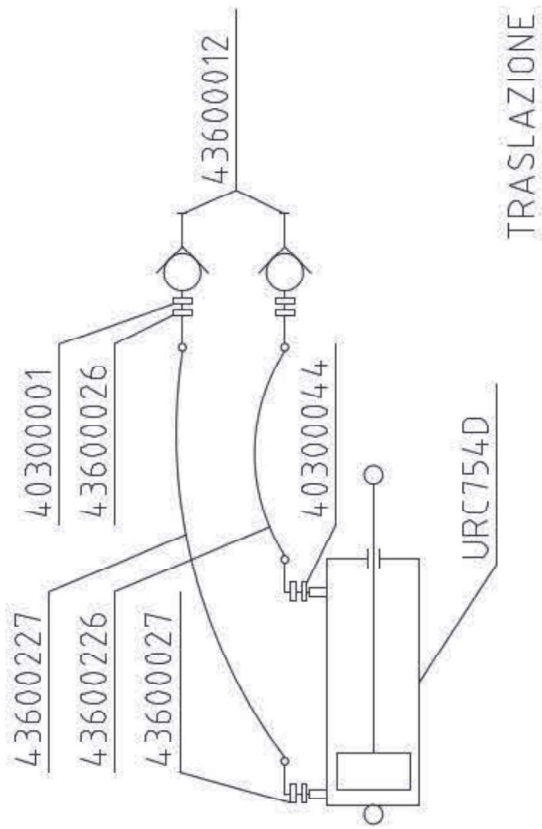
FR

DE

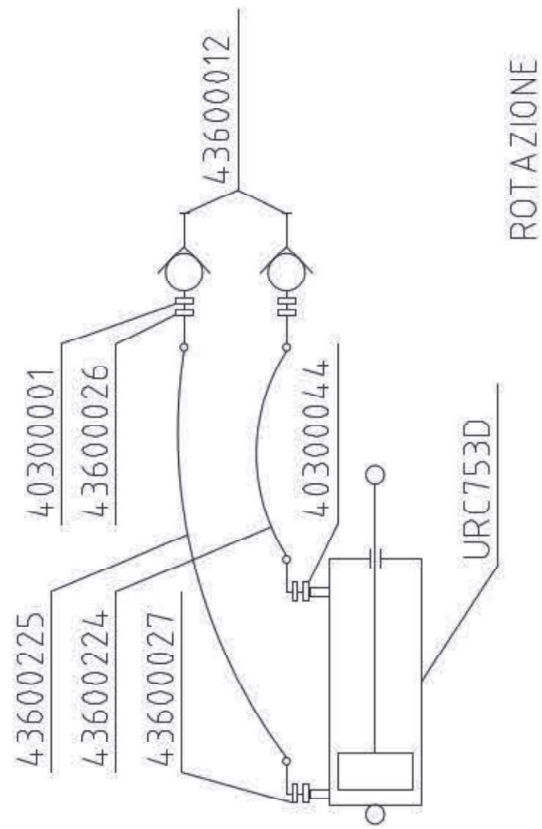
ES

RU

HYDRAULIC SYSTEM



TRASLAZIONE



ROTAZIONE



## SPARE PARTS LIST

FUNNY SUPER			
Code	Description	Quantity	
		106	132
40100001	SCREW UNI 5931 M 8X20	4	5
40100002	SCREW UNI 5931 M 8X25		1
40100012	SCREW UNI 5739 M 10X30	5	3
40100015	SCREW UNI 5739 M 12X35	4	8
40100018	SCREW UNI 5739 M 14X40	4	4
40100020	SCREW UNI 5933 M 12X25	1	1
40100024	SCREW UNI 5737 M 10X140	4	4
40100032	SCREW UNI 5739 M 6X20	2	2
40100077	SCREW UNI 5739 M 8X20	2	2
40100160	SCREW UNI 5933 M 14X45	4	4
40100180	SCREW UNI 5739 M 14X80	1	1
40100189	SCREW UNI 5739 M 10X40	4	2
40100207	SCREW UNI 5737 M 20X130	1	1
40100312	SCREW UNI 5933 M 12X30	2	2
40200002	NUT M8 DIN 980 CONELOX	6	6
40200003	NUT M10 DIN 980 CONELOX	12	6
40200006	NUT M 12 DIN 980 CONELOX	6	8
40200011	NUT M 14 DIN 980 CONELOX	9	4
40200017	LOCKNUT M20 DIN 982	1	1
40200023	NUT "GRILLO" 3/8" D.10	1	1
40200136	NUT M14 UNI 5588	1	1
40200138	NUT M6 DIN 980 CONELOX	2	2
40200153	LOCKNUT MB 30X2 DIN 985	1	1
40300001	COPPER WASHER 21X27X1,5 1/2"	4	4
40300002	WASHER D 8 UNI 6592	6	9
40300003	WASHER D 10 UNI 6592	21	10
40300004	WASHER D 12 UNI 6592	8	10
40300007	WASHER D20 UNI 6592	1	2
40300009	WASHER D14 UNI 6592	5	5
40300044	COPPER WASHER 1/4"	4	4
40400009	SEEGER E20 UNI 7435	1	1
40500008	KEY UNI 6604 A-8X7X45	1	1
40600001	GREASER UNI 7663 A-M 6X1	8	8
40600003	GREASER UNI 7663 A-M8 ZN	1	1
40700001	METAL RING GUK M 30X1,5	1	1
40700003	METAL RING GUK M 25X1.5	6	6
40900013	CHAIN GENOVESE D 7.4	2	3
41000007	BEARING	2	2
41000026	GE 45 DUST COVER WITHOUT HOLE	2	2
41000040	BEARING	1	1
41000057	BUSH GLICODUR 70X75X70	1	1
41100007	OIL SEAL 45X65X8	1	1
41100048	NYLON SEAL Ø 71,5 PER UCF 207	2	2

IT

EN

FR

DE

ES

RU

41300001	SPRING PIN D.10	2	2
41300002	SPRING PIN D.6	2	2
41500001	PIN D 10	2	2
42000032	GEAR BOX T 281 J 9.281.874 FUNNY	1	1
42300001	SPRING PIN 6X30 UNI 6873/71 ZN	3	3
42300018	SPRING PIN 8X36 UNI 6875	4	4
42400001	SUPPORT UCF 207 FK	2	2
42400005	SUPPORT UCFL 204 FK	2	2
42500002	WING PUSH ROD - POL. 3101 30X30	2	2
42500022	PLUG TNC45	1	1
42500047	RUBBER STAMP 50X20	1	1
42500049	BLACK PVC PLUG TPV	1	1
42800039	BELT B 39 1/2	2	2
43300002	BLIND RIVET D 4x12	2	2
43600012	QUICK COUPLING 1/2"	4	4
43600026	REDUCTION	4	4
43600027	NIPPLE 1/4" MM	4	4
43600078	FLAT POLYESTERE COIL DIA.25	1	1
43600223	SUPPORT FOR MALE QUICK COUPLING 1/2	4	4
43600224	TUBE SAE 100 R1 1/4"-F1/4"-F1/4" L=2850	1	1
43600225	TUBE SAE 100 R1 1/4"-F1/4"-F1/4" L=3220	1	1
43600226	TUBE SAE 100 R1 1/4"-F1/4"-F1/4" L=1750	1	1
43600227	TUBE SAE 100 R1 1/4"-F1/4"-F1/4" L=1950	1	1
43700012	SPRING PIN WITH CHAIN 98108	1	1
HOL064ZD	STAND SUPPORT	2	2
HOL176ZD	HITCH PIN	2	2
HOL179D	ROTOR LEFT LOCK	1	1
HOL210ZD	HITCH SPACER	2	2
SRM203ZD	SPACER 25,5X35X2	7	7
URC058BVD	LEVELLING ROLLER	1	
URC058CVD	LEVELLING ROLLER		1
URC061BVDC	ROTOR 106 WITH Y-BLADES	1	
URC061CVDC	ROTOR 132 WITH Y-BLADES		1
URC062BVDM	ROTOR 106 WITH HAMMERS	1	
URC062CVDM	ROTOR 132 WITH HAMMERS		1
URC080VD	BELT TIE ROD	1	1
URC083VD	BELT COVER CARTER	1	1
URC121BVD	FRAME-FUNNY SUPER 106	1	
URC121CVD	FRAME-FUNNY SUPER 132		1
URC122VD	BEARING FLANGE	1	1
URC125ZD	PIN-FUNNY SUPER	1	1
URC126VD	III POINT HITCH	1	1
URC127VD	ROTATION HUB	1	1
URC128VD	EXTERNAL CONNECTING ROD	1	1
URC129VD	INNER CONNECTING ROD	1	1
URC130VD	LINKAGE CONNECTING ROD	1	1
URC165D	SPACER	1	1
URC178ZD	LEFT SIDE PLUG	1	1
URC185VD	HOOD SUPPORT	1	1

URC281D	PULLEY 120/2B	1	1
URC286D	BELT STRETCHER ROLLER 106-132	1	1
URC289VD	MULTIPLIER SUPPORT	1	1
URC296VD	HOOD	1	1
URC301VD	MULTIPLIER SUPPORT	2	2
URC526VD	RIGHT SUPPORT PROTECTION	1	1
URC730VD	PIN WASHER	1	1
URC746D	CONNECTING ROD PIN	4	4
URC747D	PULLEY SPACER	1	1
URC748D	TIE ROD PIN	1	1
URC749D	PULLEY 170-2B	1	1
URC753D	HYDRAULIC CYLINDER 50X25X275	1	1
URC754D	HYDRAULIC CYLINDER 50X25X160	1	1
URC763BVD	FRONT CHAIN AXLE	1	
URC763CVD	FRONT CHAIN AXLE		1
URC764ZD	PULLEY LOCK	1	1
URC770VD	CARTER PROTECTION	1	1
URC824SD	OIL SEAL PLATE	1	1

## GENERAL INDEX

PREFACE .....	3
DESCRIPTION .....	5
FIELD OF USE.....	5
PERFORMANCES .....	5
PERFORMANCE LIMITS .....	5
STANDARD FEATURES.....	5
VARIANTS & ACCESSORIES .....	5
TECHNICAL FEATURES .....	6
SPECIFICATIONS PER MODEL.....	6
SAFETY INFORMATION .....	7
GENERAL REQUIREMENTS .....	7
SAFETY RESTRICTIONS .....	7
RUNNING IN.....	7
SAFETY LABELS ON THE IMPLEMENT .....	8
PTO SHAFT .....	9
CHECK THE LENGTH OF THE PTO SHAFT.....	9
HOW TO SHORTEN THE PTO SHAFT .....	10
INSTRUCTIONS FOR USE.....	11
BEFORE STARTING TO WORK.....	11
START WORKING .....	12
AT THE END OF THE WORK.....	12
MAINTENANCE INSTRUCTIONS .....	13
SHEET "A" SCHEDULED MAINTENANCE.....	13
1. GREASING .....	14
2. OIL LEVEL - OIL CHANGE .....	14
3. BLADES REPLACEMENT .....	15
4. ADJUSTMENT AND REPLACEMENT OF THE TRANSMISSION BELTS .....	16
TROUBLESHOOTING .....	17
VARIOUS INFORMATION .....	18
TRANSPORT .....	18
DEPOSIT .....	18
INFORMATION ABOUT DEMOLITION .....	18
WARRANTY .....	18
WORK AND MAINTENANCE SHEET .....	19
IMPLEMENT SPARE PARTS.....	20
MECHANISMS .....	21
SHEETS .....	22
3 POINT HITCH .....	23
HYDRAULIC SYSTEM.....	24
SPARE PARTS LIST .....	25
NOTES.....	29













Dichiarazione CE di conformità ai sensi della Direttiva Macchine 2006/42/CE

CE declaration of conformity under the Machinery Directive 2006/42/CE

Déclaration CE de conformité conforme à la Directive Machine 2006/42/CE

Eg konformitätserklärung im Sinne der Eg Vorschrift Maschine 2006/42/CE

Declaración CE de conformidad según la Directiva Máquinas 2006/42/CE

**D E L M O R I N O S. R. L.**

**- Via Caroni di Sotto n. 19 -**

**- 52033 CAPRESE MICHELANGELO (AREZZO) ITALIA -**

Dichiara sotto la propria responsabilità che la macchina "TRINCIA" è conforme ai requisiti di sicurezza e di tutela della salute di cui alla "Direttiva Macchine 2006/42/CE".

Per la verifica delle conformità alla direttiva sopramenzionata sono state consultate le norme armonizzate **UNI EN ISO 12100:2010; 13857:2008; 4524-1:2010; 4254-12:2010.**

Declare under Its own responsibility that the machine "FLAIL MOWER" complies with the safety and health protection requirements of "Machinery Directive 2006/42/CE".

To verify the conformity to the above-mentioned directive, the harmonized standards **UNI EN ISO 12100:2010; 13857:2008; 4524-1:2010; 4254-12:2010** have been consulted.

Déclare sous sa responsabilité que la machine "BROYEUR" est conforme aux prescriptions en matière de sécurité et de santé stipulées dans la "Directive Machine 2006/42/CE".

Pour le contrôle des conformités des directive citées ont été consultées les règles unifiées **UNI EN ISO 12100:2010; 13857:2008; 4524-1:2010; 4254-12:2010.**

Erklärt hiermit in eigener Verantwortung dass die Maschine "SCHLEGELMULCHER" die Schutzanforderungen und den Gesundheitsschutz, "gemäß der 2006/42/CE einhält".

Für Überprüfung der Konformität der oben genannten Vorschriften wurden Vorschriften **UNI EN ISO 12100:2010; 13857:2008; 4524-1:2010; 4254-12:2010** konsultiert.

Declara bajo su propia responsabilidad que la máquina: "TRITURADORA" cumple con los requisitos de seguridad y protección de la "Directiva Máquinas 2006/42/CE".

Para la verificación del cumplimiento de la directiva antes mencionada, se consultaron las normas armonizadas **UNI EN ISO 12100:2010; 13857:2008; 4524-1:2010; 4254-12:2010.**

**TRINCIA - FLAIL MOWER - BROYEUR - SCHLEGELMULCHER - TRITURADORA**

TYPE	MODEL							
	FUNNY SUPER C	FUNNY SUPER M						
106								
132								

Matr. n°: \_\_\_\_\_ Caprese Michelangelo li : \_\_\_\_\_



